



Matilija Copy

Volume 19, Issue 1

Editor: Cher Batchelor

Spring 2006

Calendar of Events

“The State of Ojai's Trees”

Evening Program, E.P. Foster Library, Ventura.

Wednesday, 15 March 2006, 7:30 pm.

Speaker: Thomas Bostrom, Landscape Architect,
Bostrom & Associates, Inc.

An engaging and informative overview of Ojai's trees, collectively referred to as the urban forest. The presentation shows that Ojai's urban forest has an aging tree population that is in less than average health, and that the future of this important resource depends on what is done in this decade. Questions and discussion will follow.

Mini Plant ID Session at 7:00 - bring specimens for assistance with identification.

Broom Pull, Matilija Creek

Saturday, 18 March 2006, 8:00 am.

Leader: Ken Niessen, Botanist/Plant Scientist.

Broom Pull with the Los Padres Forest Association (LPFA). This is an ongoing project to eliminate French Broom (*Genista monspessulana*) from a site on the Upper North Fork of Matilija Creek, and if time permits, at a site on Murrieta Creek. Meet at Wheeler Gorge Visitor Center to carpool to the trailhead. I don't yet know how long we'll be out, since I've not been there since 2004. Bring lunch, water, gloves, and wear boots. Long pants and sleeves might be helpful since there is poison oak. Tools will be provided. Light rain will not cancel; if it looks like a rainy weekend, call 805/646-8650 or email kgniessen@sbcglobal.net to see if it is still happening.

Native Garden Walk, Carpinteria Salt Marsh Nature Park

Saturday, 25 March 2006, 9:00 am.

Leader: Andrea Adams-Morden.

The spring plant sale is coming April 1st, so get ready to put native plants in your garden. To get ideas of how they will look, take a walk at the Carpinteria Salt Marsh Nature Park. These 9 acres of restored marsh land show how plants can be placed together, and how they will look after seven or eight years. We can then go to the Carpinteria Bluffs to look at the second year of restoration. Afterward, we will caravan to a few local front yards that are predominantly native plants.

We will meet at the Marsh entrance opposite the corner of Sandyland and Ash Avenues in Carpinteria. For information contact Andrea at aadamsmorden@yahoo.com or 684-8077.

Chapter Board Meetings, Ojai

Tentatively every first Tuesday of each month, 6:30pm.

Chapter board meetings held monthly, at a private residence in Ojai. If you want to get more involved in your local CNPS chapter, come to a meeting - there are always plenty of volunteer opportunities. Call 805-646-6045 for specific dates, directions, and more information.

Spring Plant Sale, Plaza Park, Ventura

Saturday, 1 April 2006, 9:00 am - 2:00 pm.

Plaza Park is in downtown Ventura, opposite the Post Office, on Santa Clara Avenue, two blocks east of California Street.

Many local native plants will be available for sale. Also available will be free planting advice, books, posters, T-shirts, and various other related items. Contact Lynne Kada at 643-484 or kada@yahoo.com to volunteer, for special orders, or for more info.

Native Plant Garden Tour, Theodore Payne Foundation

Saturday & Sunday, 1 & 2 April 2006, 10:00 am - 4:00 pm.

Los Angeles and Southern California residents will have a chance to explore their growing interest in natives at 31 private and public gardens during the third annual Theodore Payne Native Plant Garden Tour on Saturday and Sunday, April 1 and 2, from 10am to 4pm. Gardens throughout the Los Angeles Basin will be featured, from Monrovia to Santa Monica, from Madrona Marsh in Torrance to Quail Hollow in Tujunga. See the Theodore Payne Foundation Garden Tour link on our website for more information.



Ranunculus californicus var. *californicus* (California Buttercups)

“Going Native...Landscaping for Sustainability”

Evening Program, Location TBD.

Wednesday, 19 April 2006, 7:30 pm.

Speaker: Peigi Duvall, CNPS Horticulture Program Director.

We have daily exposure to various landscapes: our residence, place of work, and places we frequent, such as walkways, parking lots, and freeways. So many of these planted areas require large amounts of water, fertilizer, pesticides, herbicides, and often quite a bit of effort. Living in a drought-prone area with a still-expanding population, this landscaping does not seem wise or sustainable. What ways can we use our California native plants to bring about positive improvement? We are happy to welcome Peigi Duvall, Horticulture Program Director, landscape designer, and Santa Clara Valley Chapter member, who will share insights and experiences about native plants in landscaping. CNPS Horticulture Program works to bring awareness to public about our California flora.

Mini Plant ID Session at 7:00 - bring specimens for assistance with identification.

Plant Hike, Ozena Valley/Cuyama Badlands

Saturday, 22 April 2006, 8:00 am.

Leader: Ken Niessen, Botanist/Plant Ecologist.

Join botanist Ken Niessen for a California Native Plant Society/Los Padres Forest Association hike on the grounds of the Pine Mountain Buddhist Temple in Ozena Valley. The location has a diverse array of microclimates, which should provide some interesting botanizing. Meet at the Wheeler Gorge Visitor Center on Hwy 33 at 8 am. The return should be no later than 5 pm. We will caravan to the Pine Mountain Buddhist Temple. Wear boots, and bring water and a lunch (please respect our hosts: no meat or fish please!). If the weather looks rainy the hike may be cancelled; please contact Ken at 805-646-8650 or kniessen@sbcglobal.net if you need more information.

“Watershed Restoration...Recovery Efforts for Southern California Steelhead”

Wednesday, 21 June 2006, 7:30 pm ~ Speaker: Mauricio Gomez. Evening Program, Santa Barbara Botanic Garden.

Mauricio Gomez is the manager of the watershed restoration program at the Community Environmental Council in Santa Barbara, where he plans and implements fish barrier modification and other habitat improvement projects and provides staff support for several community based watershed councils. Before joining CEC, he served as a research scientist in the Department of Ecology, Evolution and Marine Biology at the University of California, Santa Barbara working in intertidal ecology, biological oceanography, and habitat restoration fields. He earned his B.S. in Aquatic Biology from UCSB. His program will focus on the recovery efforts to the Southern California Steelhead trout along the south coast of Santa Barbara County with assistance of community-based watershed councils/agencies. Mini Plant ID Session at 7:00 - bring specimens for assistance with identification.

“Ormond Beach Restoration Update”

Evening Program, E.P. Foster Library, Ventura.

Wednesday, 19 July 2006, 7:30 pm.

Speaker: Sandi Matsumoto, The Nature Conservancy.

Ms. Matsumoto, Project Director for The Nature Conservancy, will give an update on the progress of the Ormond Beach Restoration Project, spearheaded by the Ventura County Wetlands Recovery Task Force and the Nature Conservancy.

Mini Plant ID Session at 7:00 - bring specimens for identification.

California Coastal Cleanup Day

Saturday, 16 September 2006, 9:00 am.

Sponsored by the California Coastal Conservancy.



Umbellularia californica var. *californica* (California Bay)

Channel Islands Chapter Annual Dinner

Saturday, 23 September 2006, 4:30pm to 9pm.

Speakers: Brad Jenkins, CNPS President, and

Amanda Jorgenson, CNPS Executive Director.

The Chapter holds a dinner event for all members each fall. It is an opportunity to review the successes of the past year and to socialize with other members. Social hour includes wine tasting, silent auction, gourmet appetizers, live music, and other activities. The dinner will be catered by Ojai's The Garden Terrace. This is an event you don't want to miss. Come enjoy a relaxing and informative evening in one of Ojai's most beautiful settings (Old Creek Ranch Winery), and get to know over 100 members with similar interests. Contact Cher Batchelor, chapter secretary, at 805-646-6045 for more information.

“Santa Clara River Watershed”

Exact Date TBD November 2006, 7:30 pm.

Evening Program, E.P. Foster Library, Ventura.

Speaker: Heene Anderson, Botanist.

More to come.

Please be sure to check out our website...

www.cnpsci.org...
weekly to view updates and
new current events like these.



Viola pedunculata spp. *pedunculata* (Johnny-jump-up)

Directions to the E.P. Foster Library: from the North on US101 take Ventura Ave exit, go straight 2 blocks and turn Right onto Main St.; go 6 blocks East and turn Left onto Chestnut St. From South on US101 take the California St. exit; go 2 blocks and turn Right onto Main St. and turn Left onto Chestnut. Parking is located behind the library, and there is a rear entrance to the **Topping Room**, on the West side of the library. 651 E. Main St.

Directions to the Santa Barbara Botanic Garden:

The Garden is located at 1212 Mission Canyon Dr. (many routes lead through Santa Barbara to Foothill Road/ SR192). Mission Canyon Dr. is North of SR192.

CNPS Channel Islands Chapter Task List

We are in need of volunteers to help with specific tasks and projects.

Please see if any of these tasks interest you and contact us with anything you can help us out with.

- ♣ Historian/Archives
- ♣ Develop & expand Native Plant Nursery (local native species)
- ♣ Upper Ojai Growing Grounds (wildflowers, crafting plants, seeds, etc. for schools and for sale)
- ♣ Education program involving colleges (taxonomy classes & hikes)
- ♣ Increase poster sales
- ♣ Increase staffing tables/booths at environmental events
- ♣ Book Sales/Librarian
- ♣ Introductory Newsletter for Chapter
- ♣ Quarterly Membership Meetings
- ♣ Conservation Program Staffing
- ♣ Annual Planning Meeting
- ♣ Membership Coordinator
- ♣ Chumash Native Plant Garden Brochure
- ♣ Ventura County Rare Plants Publication
- ♣ Ventura County Flora completed and published
- ♣ Help organize 2 major habitat restoration days per year
- ♣ Expand Chapter Education Program
- ♣ Elementary School Gardens (introducing botanical/butterfly books to teachers)
- ♣ Educator's Initial Meeting/Education Workshop (what members are educators, make committees, assign tasks)
- ♣ Reinvent the Plant Sale/increase sales
- ♣ Newsletter Editor
- ♣ Identify Vegetation Mapping Gaps
- ♣ Honor Farm/Organic Farm-Beneficial/Companion Plantings
- ♣ Bake Sale at the Plant Sales
- ♣ Trails Checklists/Brochures published for sale
- ♣ Topical Displays for display boards
- ♣ Farmer's Workshop to protect riparian zones/habitats
- ♣ Website Maintenance
- ♣ Volunteer Coordinator
- ♣ Develop Contact Management System
- ♣ Publicist/Advertising
- ♣ Develop Santa Barbara County Membership Leadership
- ♣ Coordinate Chapter activities with Santa Barbara Botanic Garden
- ♣ Restoration Programs supported by grants
- ♣ Update Bylaws
- ♣ Create central location for all Chapter equipment/merchandise
- ♣ Cable Program-CNPS show on local cable access



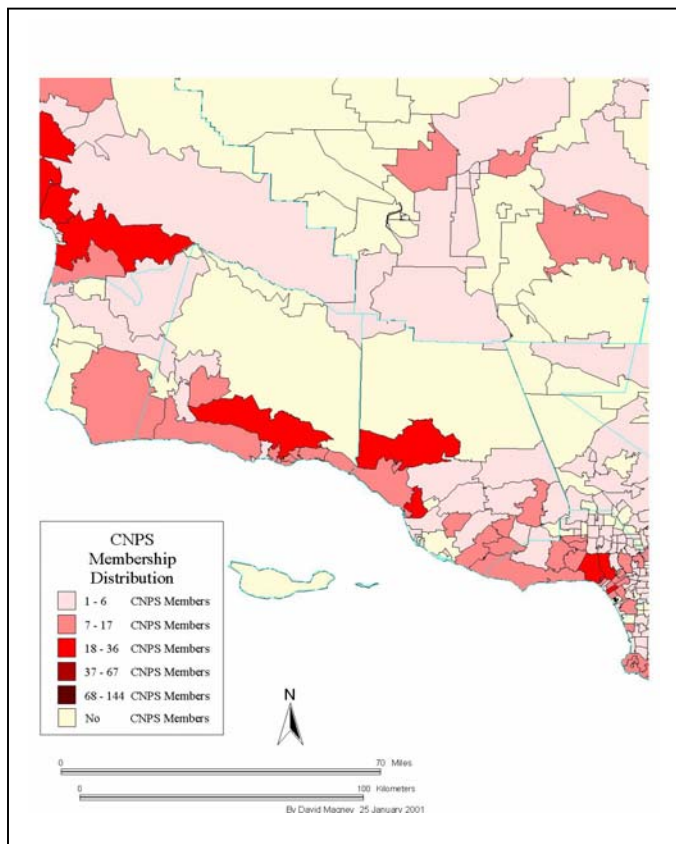
Marah fabaceus var. *agrestis* (California Man-root)



Marah macrocarpus var. *macrocarpus*
(Large-fruited Man-root)



Non-Profit Organization
U.S. POSTAGE PAID
OXNARD, CA
PERMIT NO. 398



TIME VALUE MATERIAL

Channel Islands Chapter Officers/Program Contacts

Office/Position	Name	Phone #	Email Address
President*:	David Magney	646-6045	president@cnpsci.org
Vice President-(V)*:	Lynne Kada	643-4842	kada@yahoo.com
Vice President-(SB)*:	Charlie Blair	733-3189	blairce@sbceo.org
Secretary*:	Cher Batchelor	639-0653	cher@magney.org
Treasurer*:	Elizabeth Chattin		treasurer@cnpsci.org
Conservation*:	David Magney	646-6045	president@cnpsci.org
Vegetation/PlantScience*:	Ken Niessen	646-8650	kgniessen@sbcglobal.net
Education*:	<i>Your Name Could Be Here</i>		
Horticulture*:	Patt McDaniel	646-9948	mcins@west.net
Legislation*:	<i>Your Name Could Be Here</i>		
Rare Plant Coord. (V):	David Magney	646-6045	president@cnpsci.org
	Rick Burgess	983-1312	
Rare Plant Coord. (SB):	Steve Junak	682-4726	sjunak@sbbg.org
Membership:	Rita DePuydt	640-3700	suncoast@west.net
Newsletter Editor:	<i>Your Name Could Be Here</i>		
Periodic Plant Watch:	Rick Burgess	983-1312	
Invasive Exotics:	Ken Niessen	646-8650	kgniessen@sbcglobal.net
Programs:	Lynne Kada	643-4842	kada@yahoo.com
Program Facilitator (SB):	Andrea Adams-Morden	684-8077	aadamsmorden@yahoo.com
Program Facilitator (V):	Richard Bradley	646-6633	
Publicity:	Connie Rutherford	339-9779	ruthercam@earthlink.net
Field Trips:	<i>Your Name Could Be Here</i>		
Plant Sales:	Lynne Kada	643-4842	kada@yahoo.com
Poster Sales:	Scott Brown	525-9905	sbrown5534@aol.com
Member-At-Large*:	Patt McDaniel	646-9948	mcins@west.net
Member-At-Large*:	Chris Bysshe		cbysshe@yahoo.com
Member-At-Large*:	Scott Brown	525-9905	sbrown5534@aol.com
Webmaster	Teri Reynolds	646-6045	webmaster@cnpsci.org

(All telephone numbers are in Area Code 805)
* = officer (voting)

CNPS Membership Application

Category	Annual Amount
<input type="checkbox"/> Student/Retired/Limited Income	\$ 30
<input type="checkbox"/> Individual or Library	\$ 45
<input type="checkbox"/> Family or Group	\$ 60
<input type="checkbox"/> Supporting	\$ 75
<input type="checkbox"/> Plant Lover	\$100
<input type="checkbox"/> Patron	\$250
<input type="checkbox"/> Benefactor	\$500

I wish to affiliate with the Channel Islands Chapter of the
California Native Plant Society.

Name _____
Address _____
City _____ State _____ Zip _____
Phone _____ Email _____

Please do not share my address with any other organization

Send Membership application and check to:
California Native Plant Society (or CNPS)
2707 K Street, Suite 1
Sacramento, California 95816-5113